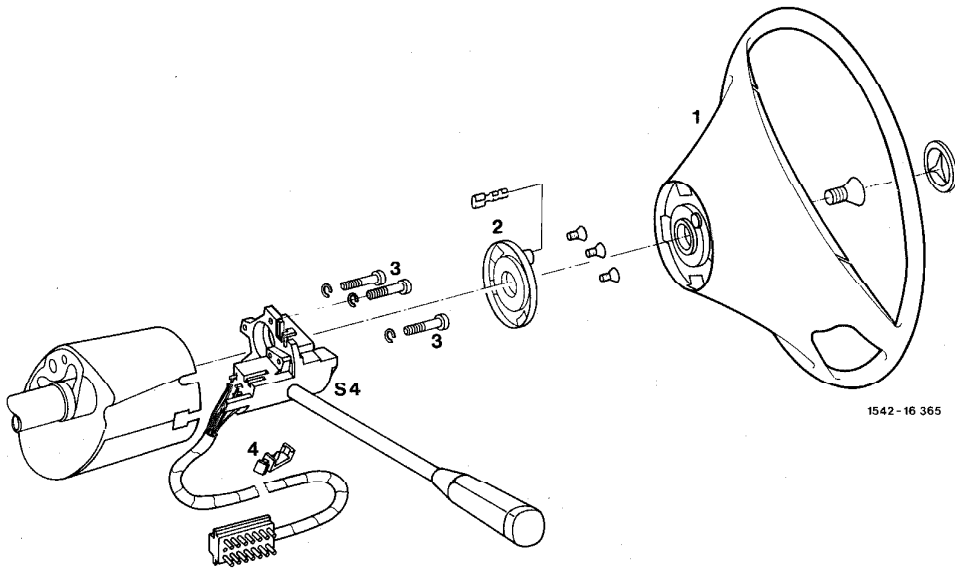


54-310 R and R combination switch



Battery	disconnect, connect
Steering wheel (1)	remove, reinstall
Cover	below instrument panel remove, reinstall (68-150)
Cover plate (2)	remove, reinstall (only vehicles with airbag)
Mounting screws (3)	screw out, screw in
14-pole plug	pull off, fit below instrument panel
Combination switch (S4)	remove from cover of jacket tube (on vehicles with cruise control and/or airbag unclip clip (4) for the attachment of wires to combination switch) Install in reverse order.